



Set up your TiVo® Mini in 4 easy steps

1 On your Main TiVo DVR, allow live TV sharing

To watch live TV on your Mini, you'll need to turn on the "Allow live TV sharing" setting on your **TiVo Premiere Q DVR**. Depending on how many TiVo Minis you have in your home, you can choose how many tuners your TiVo Premiere Q can share. (Note that once you share a tuner, your Premiere Q can no longer use it to watch or record shows.)

1. On your TiVo Premiere Q's TiVo Central screen, go to **'Settings & Messages' > 'Settings' > 'Remote, Cable CARD, & Devices.'**
2. Select **'Allow Live TV on other devices.'**

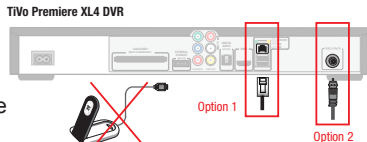


2 Check your Main TiVo DVR's network connection

1. Verify that your **TiVo Premiere Q** is connected to your home network using either a wired connection as shown below.

Option 1: Your TiVo DVR is connected to an open port on your router or to an Ethernet jack in your wall using an Ethernet cable (shown below).

Option 2: Your TiVo DVR is connected to the coaxial cable coming from the wall to the CABLE/MoCA port on the back of the TiVo Premiere Q DVR. You must have MoCA® enabled in your home to use this option.



2. Make a connection to the TiVo service. Go to **'Settings & Messages' > 'Settings' > 'Network' > 'Connect to the TiVo Service now.'**

Set up your TiVo® Mini in 4 easy steps...cont'd

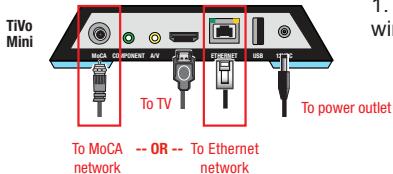
3 Connect your Mini

Connect your TiVo Mini to your home network and TV, and plug it in.

1. Connect your TiVo Mini to your home network using either a wired connection.

Option 1: Connect your TiVo Mini to an open port on your router or to an Ethernet jack in your wall using an Ethernet cable (shown left).

Option 2: If you already have MoCA enabled in your home, simply connect the coaxial cable coming from the wall to the MoCA port on the back of the TiVo Mini.



2. Connect an HDMI cable from the back of the TiVo Mini to the back of your television.

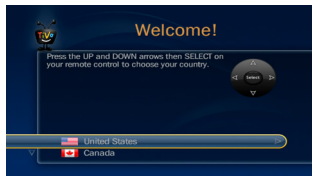
3. Plug in the power cord.

4 Complete Mini setup

Turn on your TV to see the Welcome screen.

When you see the Welcome screen, you're ready to begin Guided Setup. **Just follow the on-screen instructions.**

Note: If you don't see the Welcome screen, use the Input, Source, or TV/Video button on your TV remote or TV to select the correct audio/video input source for your TV.



Need some help? Call us at 344-5005

